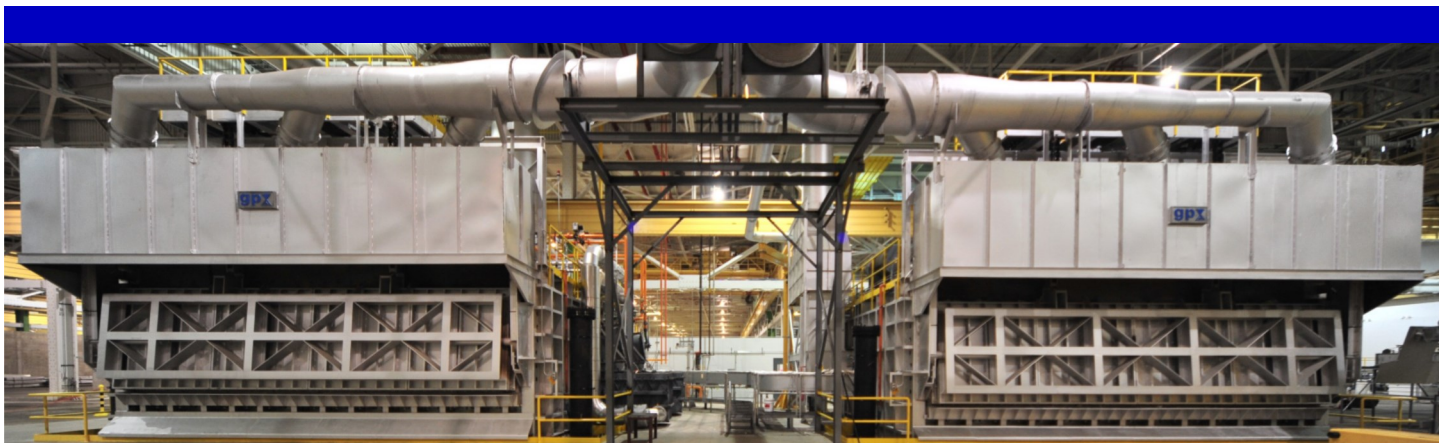


GILLESPIE & POWERS, INC

TILTERS

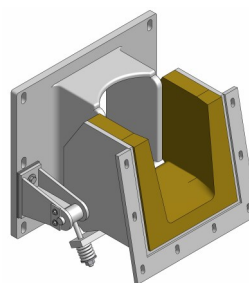


GILLESPIE & POWERS' UNIQUE FEATURES:

- ◆ Anti-shock hydraulic power unit
- ◆ Hydraulic fluid temperature control built into hydraulic unit
- ◆ Individual mass flow burner control for precise temperature control
- ◆ Control of furnace can be self-contained or tied to casting facility
- ◆ Electronic signal actuated flow control valve instead of servo valves and/or solenoid valves for smooth flow control

ADVANTAGES OF TILTERS:

- ◆ Ease of cleaning
- ◆ Metal flow control
- ◆ Safety—Not tap out block
- ◆ Alloy changes easily accomplished
- ◆ Metal temperature when pouring +/-5°F



**Refractory
Lined Pivoting
Pour Spout**



GILLESPIE & POWERS, INC.

9550 True Dr. St. Louis, MO 63132 USA

Telephone: 314-423-9460 Fax: 314-428-4431

E-mail: info@gillespiepowers.com

Visit us at: www.gillespiepowers.com

